

16 August 2024

## **Levande's The Cambridge - Development Communications Update August 2024**

Levande is pleased to be working with Richard Crookes Constructions (RCC) and EPM Projects (EPM) on the redevelopment of Our Lady Help of Christians Parish and School site in Epping. Above the redevelopment will rise Levande's new vertical village, The Cambridge, a 28-storey retirement community providing a unique wellbeing offering connecting residents with support services and partnerships for health and wellbeing into the future.

Below is an outline of the works completed to date, with a summary of the anticipated works for August 2024.

### **Works completed to date:**

- Commencement of Line Marking, Signage and Carpark requirements to SP1 and SP2 Basement areas.
- Core structure is complete up to Level 17.
- Formwork strip-out complete up to Level 9.
- Staged concrete pours to the tower are progressing up to Level 13.
- Roof membrane works and plant room installation to the School are ongoing.
- Level 4 (Roof) landscaping works completed.
- Basketball court topping slab completed with soft landscaping and line marking commenced.
- Parish Level 4 soft landscaping commenced.
- Level 1 Parish courtyard paving completed and soft landscaping works commenced.
- Defect inspections, testing and commissioning is ongoing for both the School and the Parish.
- Landscape and civil works are ongoing on Oxford St.

### **Anticipated works for August 2024:**

- Completion of Tower Façade up to Level 11.
- Completion of School Level 4 external works.
- School soft landscaping to be completed.
- Topping slabs throughout Level 1 to be completed.
- Completion of membrane and pavers on Cambridge St stairs.
- Completion of testing and commissioning in all areas throughout the School and Parish.
- All landscaping for the Parish to be completed.

### **Retirement Living Update:**

- Regular information sessions are now being held at the Epping Club as well as private appointments with the sales team at the display suite on Pembroke St. Please register your interest via our website to learn more and hear about our exciting upcoming events: <https://www.levande.com.au/community/epping/>

*Levande*

Level 18, 9 Castlereagh Street  
Sydney, NSW 2000, Australia  
T 1800 72 71 70  
[levande.com.au](https://www.levande.com.au)



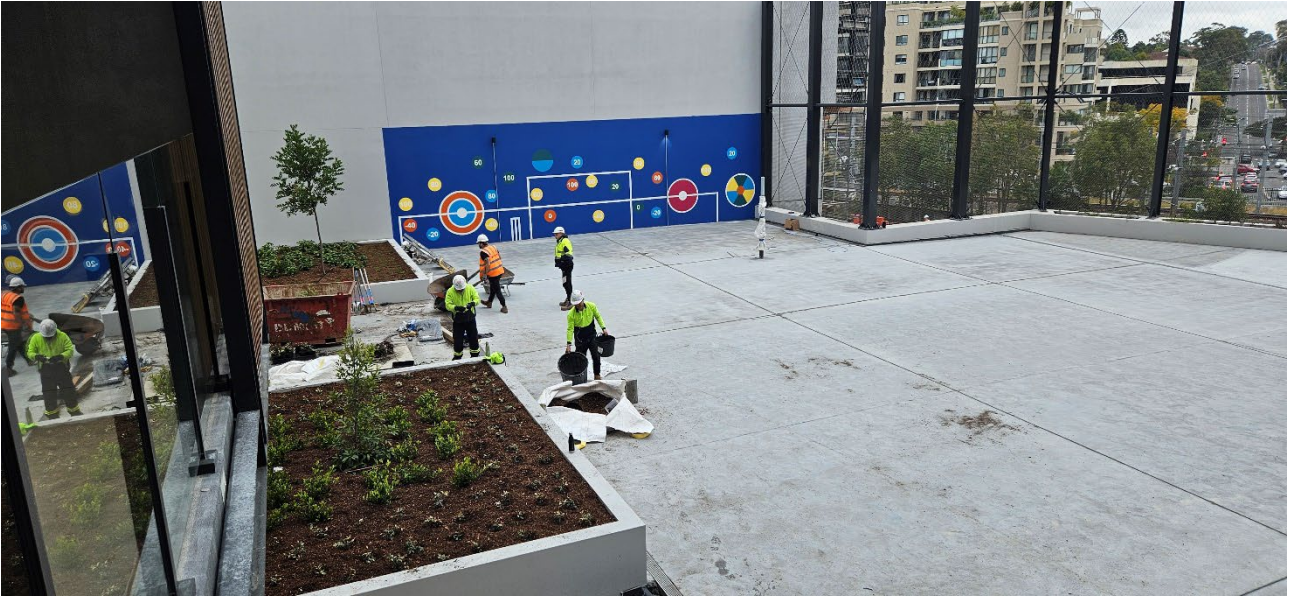
Forming for topping slab – OSHC, Level 1



Paver install and soft landscaping - Parish Courtyard, Level 1



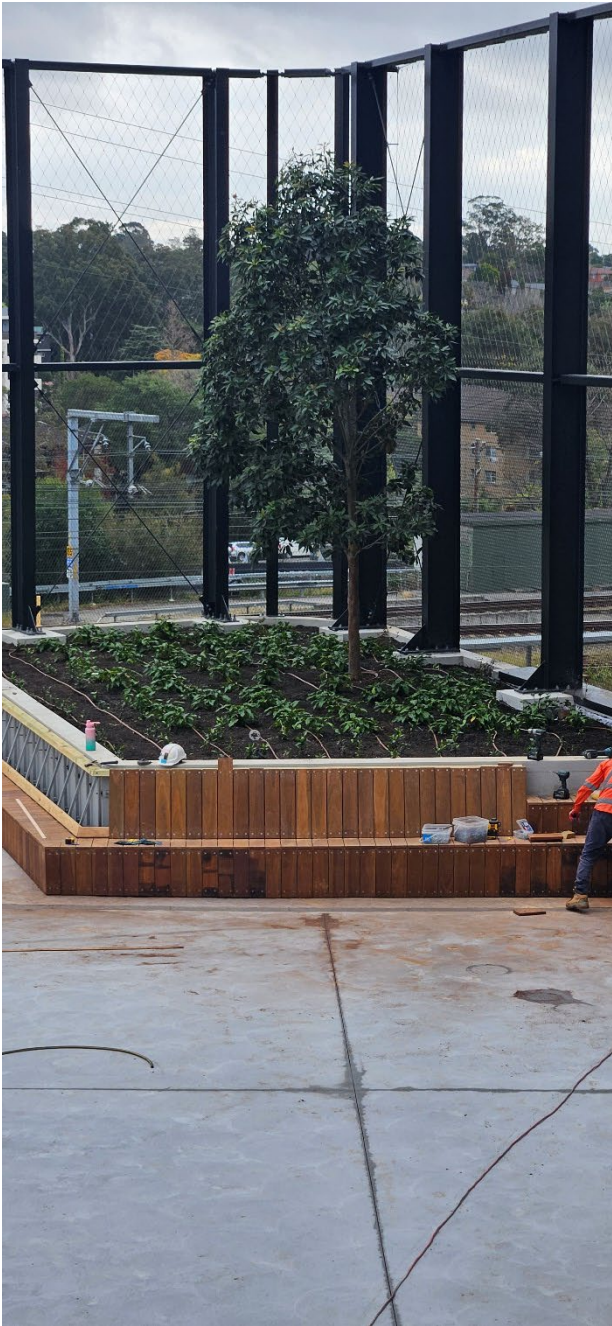
Soft landscaping - School Basketball Court, Level 1



Wall mural, School Basketball Court level 1



Landscaping works – School Basketball court, Level 1



Forming for topping slab, School level 1



Paver install – School, Oxford St frontage



Crash barrier construction – Church, Oxford St frontage



Paving of bleachers – Parish Forecourt



Parish Servery (Internal) – Parish Hall



Parish Servery (External) – Parish Hall



Temporary fire door hold-open installation - Link Bridge Parish Hall/Church

